

Bureau Of Transportation Statistics: Programs and Priorities for 2009

George Mason University CDS/CCDS/Statistics Colloquium Series
January 30, 2009 10:45am

Steven K. Smith, Ph.D.

Acting Director,
Bureau of Transportation Statistics
Research and Innovative Technology
Administration
U.S. Department of Transportation
www.bts.gov

The Bureau of Transportation Statistics

Established within the U.S. Department of Transportation (USDOT) in 1992 to collect, report, and analyze transportation data.



Today, BTS is a component of the USDOT Research and Innovative Technology Administration (RITA). RITA coordinates the Department's ever-increasing range of innovative transportation activities, statistics, research, and technologies.

BTS is a Knowledge Based Organization

As a federal statistical agency, The Bureau's efforts focus on obtaining—and helping to objectively analyze and interpret—data that will be used to increase the Nation's understanding of transportation topics and to better inform decisions and policies.

To achieve this goal, BTS engages in three central activities: *creating, managing, and sharing* transportation statistical knowledge.

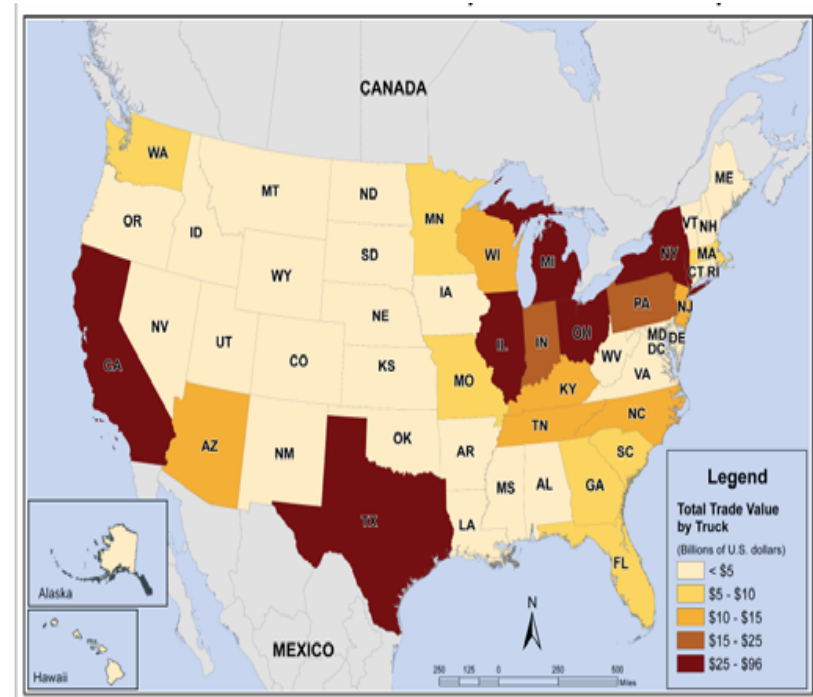
Stakeholders:

BTS stakeholders include:

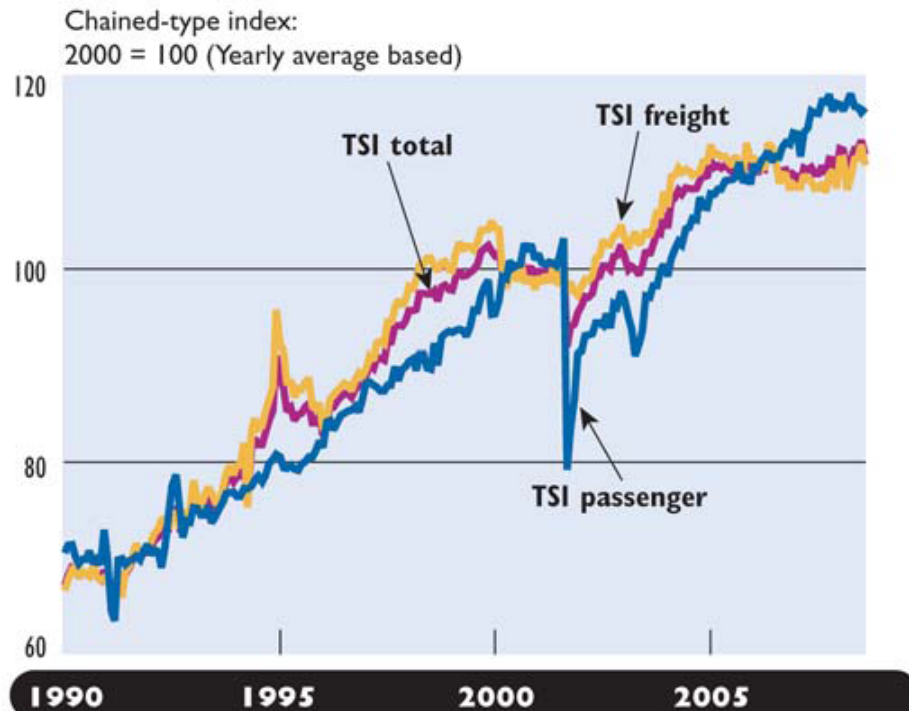
- US DOT,
- Federal agencies,
- Congress
- State and local governments,
- Metropolitan planning organizations,
- Universities,
- The private sector, and
- The general public.

Total Trade Value by Truck Between Individual States and Our NAFTA Partners, 2007

In 2007, over 29 percent of the value of all goods moved in the U.S.-international trade was in U.S. trade with Canada and Mexico.



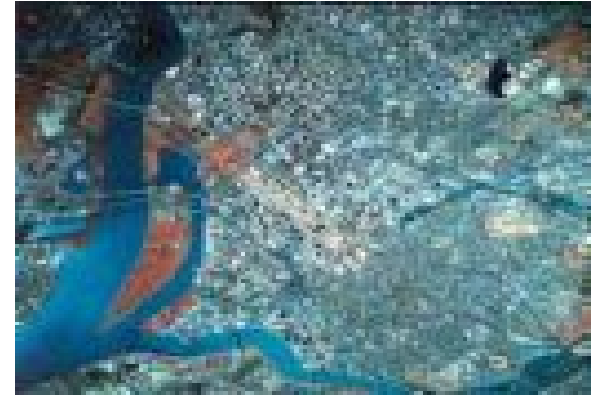
Seasonally Adjusted Transportation Services Index: 1990 - 2008



► *Transportation Services Index*

The Transportation Services Index (TSI) is a monthly measure of the volume of services performed by the for-hire transportation sector. It is the only national, multimodal, seasonally adjusted economic gauge of both passenger and freight transportation activity. It is released each month on a published schedule.

Geospatial Information

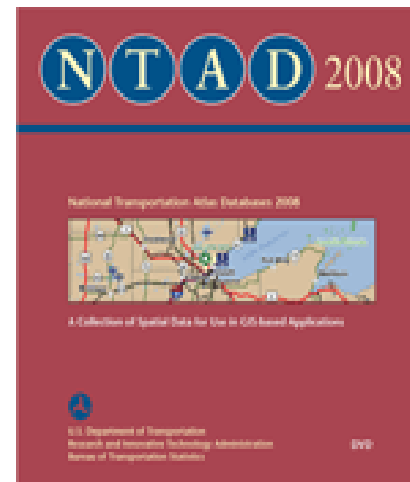


BTS actively contributes to the Nation's geospatial knowledge by developing software to improve the estimation of travel routes and by collaborating with federal agencies and stakeholders to advance geographic data efforts.

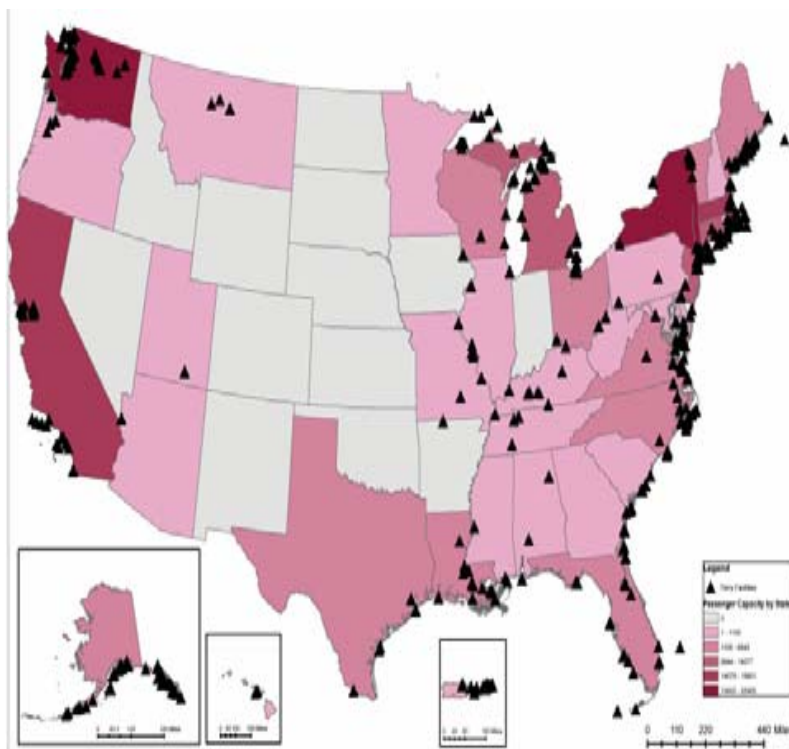
BTS serves as the liaison for the DOT to the Federal Geographic Data Committee and houses the Department's Geographic Information Officer responsible for leading geospatial activities within the Department and overseeing the Department's OMB Circular A-16 and geospatial Exhibit 300 activities.

National Transportation Atlas Database (NTAD) 2008 DVD

The National Transportation Atlas Database (NTAD) DVD, comprises a set of 26 nationwide geographic databases of transportation facilities, transportation networks, and associated infrastructure and safety that are compiled and distributed annually via disc and online.



Geographic Location of the Nation's Ferry System



With the addition of ferry terminals to the database, which already contained intercity rail terminals and airports, the online database now includes nearly 1,500 terminals. BTS published two new reports with these data, one highlights findings for ferry terminals and another details the connectivity criteria. Data collection for the next phase of the project (rail transit) is underway and will continue through FY 2009.

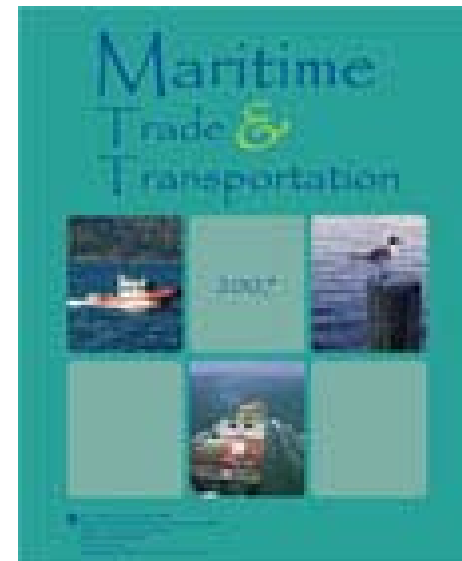
BTS leads the Maritime Data Working Group



The Committee on the Maritime Transportation System (CMTS) is led by the USDOT and other federal agencies with responsibility for an aspect of the U.S. marine transportation system. Members of the working group are the U.S. Maritime Administration, Saint Lawrence Seaway Development Corporation, U.S. Army Corps of Engineers, U.S. Coast Guard, Federal Maritime Commission, U.S. Department of Agriculture, the Committee on the Maritime.

Maritime Trade and Transportation Report

The third edition of the *Maritime Trade and Transportation Report* was prepared in support of the Committee on Marine Transportation System (CMTS), a major effort to better coordinate marine Transportation system activities, resources, and regulations.



▶ **Airline Data**

BTS' Airline Information Program is the Nation's only source of comprehensive airline traffic, financial, and performance data.



BTS regularly collects a wide range of airline-related data. These data are used by customers within the USDOT, including the Office of Aviation Analysis, the Federal Aviation Administration (FAA), and the Office of the General Counsel. Stakeholders outside of the USDOT, such as Congress, the Department of Homeland Security, state and local governments, the air transportation industry, researchers, academia, and the public, also rely on BTS airline data products and reports.

National Transportation Library



During FY 2008, the National Transportation Library's Reference Team handled more than 3,000 requests per month for information about transportation regulations, policy, statistics, and research. These requests came from Congress, all other levels of government, the media, academia, for-profit and nonprofit organizations, and the general public.

National Transportation Library cont'd

- In FY 2008, the NTL added several new collections to the NTL Digital Repository. Such as a set of early publications from the Eno Transportation Foundation, containing documents ranging from 1909 to 1978.
- The NTL also added the entire contents of the Intelligent Transportation System Joint Program Office's Electronic Digital Library (EDL) to the NTL Digital Repository in July 2008. The EDL is an NTL Collection View, which provides specific user communities with a separate search interface that displays only their own collections and appears as their own website, while simultaneously appearing as part of the NTL Digital Repository. The new EDL is available at www.its.dot.gov/library.htm

Reports



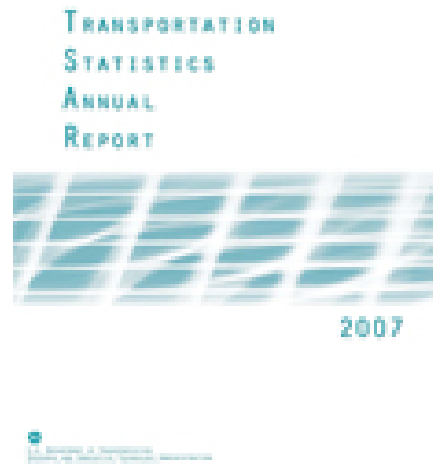
SPECIAL REPORTS:

- Highlights of the 2006 National Census of Ferry Operators
- Cell Phone Use on Airplanes, Congestion, and Telecommuting—Opinions from the 2006 and the 2007 Omnibus Household Survey
- Data-Driven Risk Models Could Help
- Target Pipeline Safety Inspections
- Sitting on the Runway: Current Aircraft Taxi Times Now Exceed Pre-9/11 Experience
- U.S.-China Trade Growth and America's Transportation System
- Trends in Personal Income and Passenger Vehicle Miles

TECHNICAL REPORTS:

- *Seasonal Variation in Traffic Congestion: A Study of Three U.S. Cities*
- *Multiple Imputation of Missing Passenger Boarding Data in the National Census of Ferry Operators*
- *Uncovering Trends in Seasonal Transportation Data*
- *Transportation Services Index and the Economy*

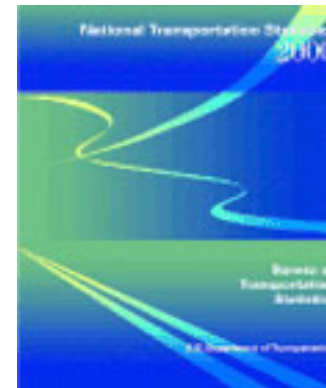
Transportation Statistics Annual Report (TSAR)



The **Transportation Statistics Annual Report** presents transportation facts and modal indicators, the current state of transportation statistics, the economic and social impacts of the U.S. transportation system, and several maps. The latest version is due to be published by BTS in FY 2009 and will include transportation data on the 13 topics specified in the Bureau's legislative mandate

National Transportation Statistics (NTS)

National Transportation Statistics, updated quarterly online, presents a comprehensive compilation of statistics on the U.S. transportation system, including more than 260 data tables.



State Transportation Statistics



State Transportation Statistics presents a statistical profile of transportation in the 50 states and the District of Columbia, and is updated annually.

BTS Data Activities in Selected Areas.

Selected areas for BTS statistical programs
– *safety, congestion, global connectivity, sustainability, and security.*



Safety



BTS collects data and produces studies on the safety and security of travelers, vehicles, and transportation systems.

The Omnibus Household Survey collects data the public's use and satisfaction with the transportation system, including personal safety and security while traveling.

The Confidential Close Calls Reporting System (C3RS) Demonstration Project, is a major safety initiative sponsored by the Federal Railroad Administration (FRA) that has required BTS to work closely with railroad management and labor as well as the FRA and the Volpe National Transportation Systems Center.

Congestion



BTS studies on travel times and congestion measurement help decision makers determine the impact of congestion on the national transportation system and the U.S. economy. These projects cut across all modes: collecting line-haul speeds and terminal dwell times for railroads, reporting travel speeds and forecasting vehicle miles traveled on highways, and estimating the economic costs of congestion across modes.

Global Connectivity



Using a wide variety of data sources, BTS provides a detailed picture of the flow of people and goods to and from the United States. BTS compiles, validates, analyzes, and disseminates data on trade trends; movement of goods by land, sea, and air; and personal travel.

In June, the agency published a special report: *U.S.-China Trade Growth and America's Transportation System*, which was used by the Office of the Secretary of Transportation in the recent Strategic Economic Dialogue meetings.

Sustainability



BTS provides statistics and analysis to the USDOT Center on Climate Change and Environmental Forecasting, including its project to examine the effects of sea level rise on the Nation's transportation infrastructure.

BTS serves as an active member of the technical oversight panel for the Transportation Research Board's Hazardous Materials Cooperative Research Program.

CONTINUING WORK TOWARD THE FUTURE



BTS Activities for 2009

- **Geo-Spatial Data Systems,**
- **Commodity Flow Survey,**
- **International Transportation Data,**
- **Forecasting and Modeling,**
- **Safety and System Performance,**
- **National Transportation Library,**
- **Expanding Statistical Programs (ACTS Recommendations)**

Meeting Department Priorities

BTS Statistical activities:

- **Safety,**
- **Economic Recovery,**
- **Sustainability,**
- **Livability.**



Questions?



For more information

Steven.K.Smith@dot.gov

or

202-493-0145

www.bts.gov